

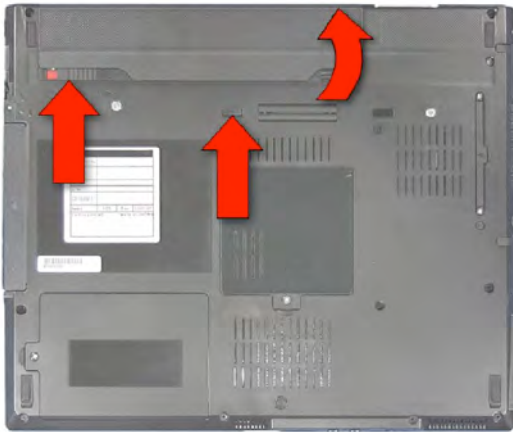


Technical Procedure

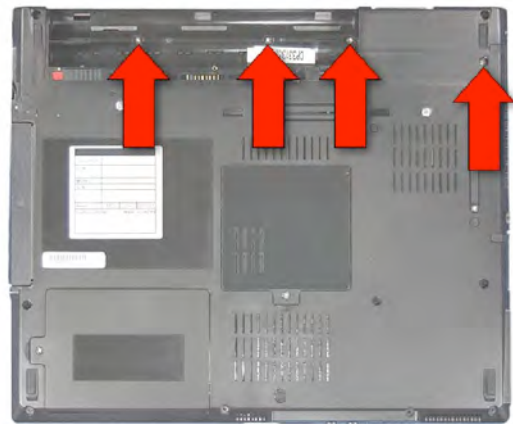
LifeBook E8310

Wireless Card Replacement

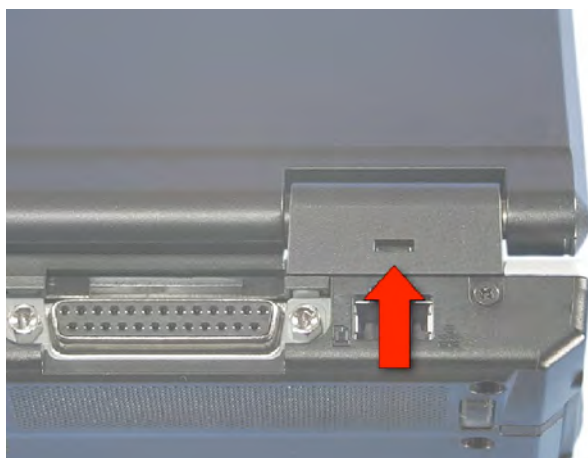
ESD Precautions are required when working on this LifeBook computer.
Make sure the LifeBook is turned off before beginning this procedure.



1. Turn the LifeBook over. Release and remove the battery.



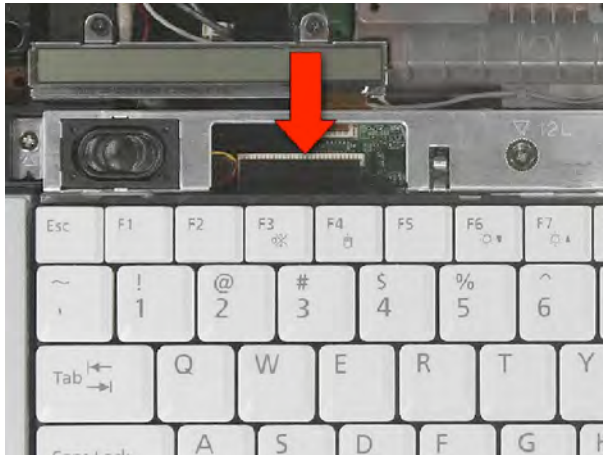
2. Remove 3 screws from inside the Battery Bay. Remove one screw from the rear of the Lower Cover.



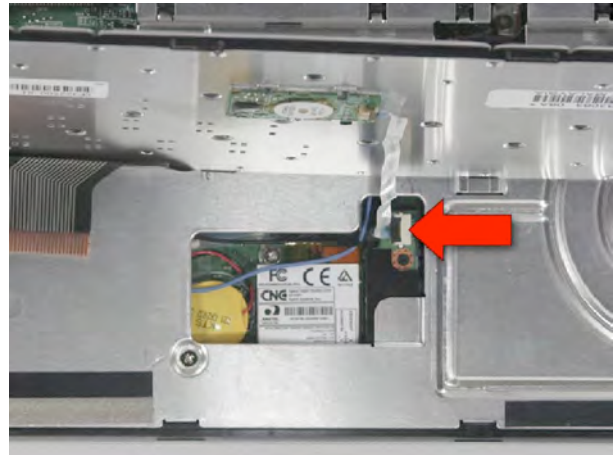
3. Turn the LifeBook up and use a plastic pry tool to release the Hinge Cover tabs on both sides.



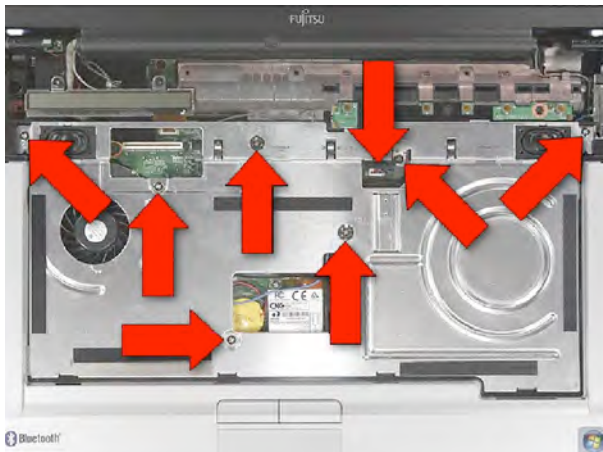
4. Open the LifeBook. Use a plastic pry tool to remove the Hinge Cover.



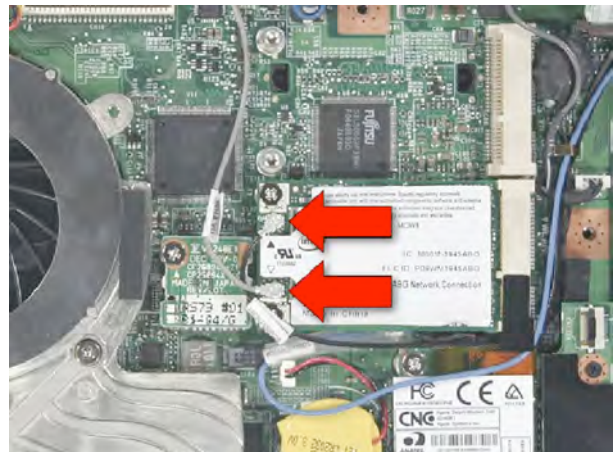
5. Disconnect the Keyboard Cable from the System Board.



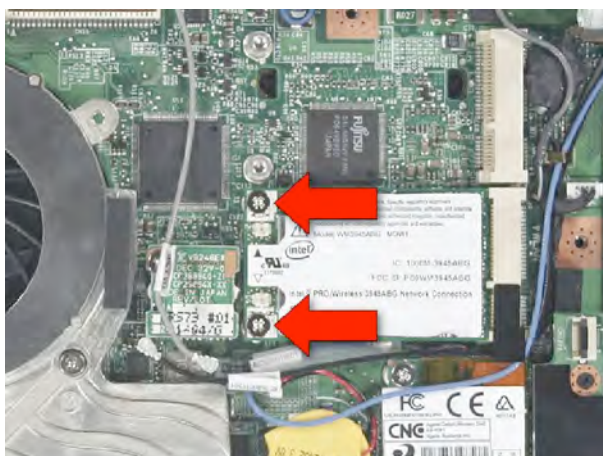
6. Slide the Keyboard forward and tilt it up. Disconnect the Touch Stick cable from the System Board. Remove the Keyboard.



7. Remove 7 screws from the Keyboard Plate. Disconnect the Speaker Cable from the System Board. Remove the Keyboard Plate.



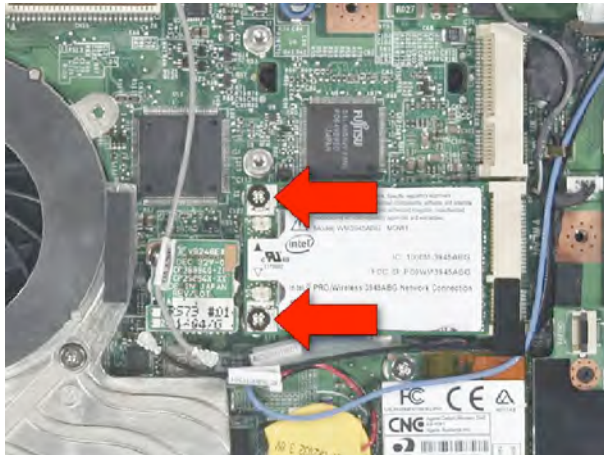
8. Disconnect both Wireless Antenna Cables from the Wireless Card.



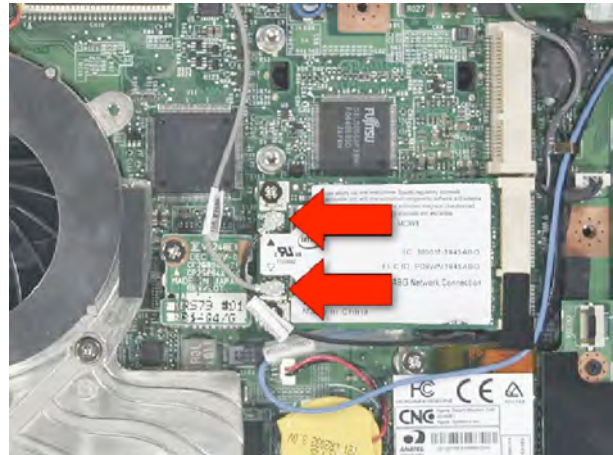
9. Remove 2 screws from the Wireless Card. Remove the Wireless Card.



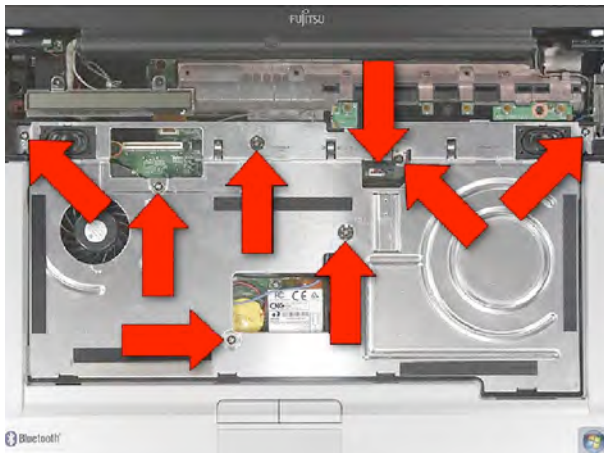
10. Begin Assembly Procedure



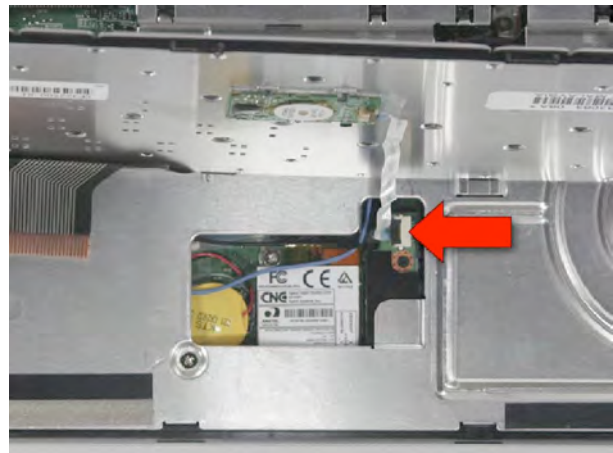
11. Secure the Wireless Card with 2 screws.



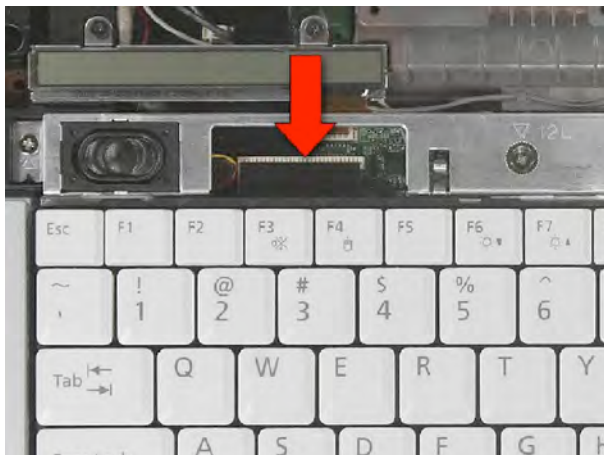
12. Connect the Black Wireless Antenna Cable to the Auxiliary connector on the Wireless Card, and the Gray Wireless Antenna Cable to the Main connector.



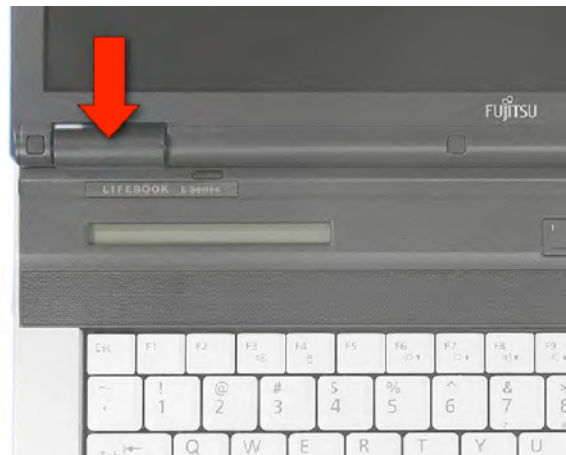
13. Secure the Keyboard Plate with 7 screws. Connect the Speaker Cable to the System Board.



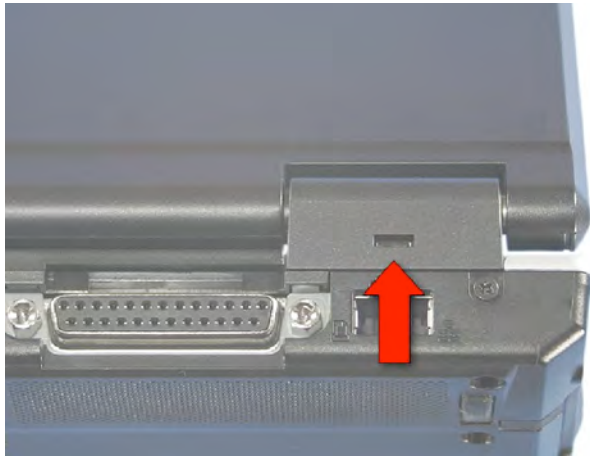
14. Connect the Touch Stick cable to the System Board.



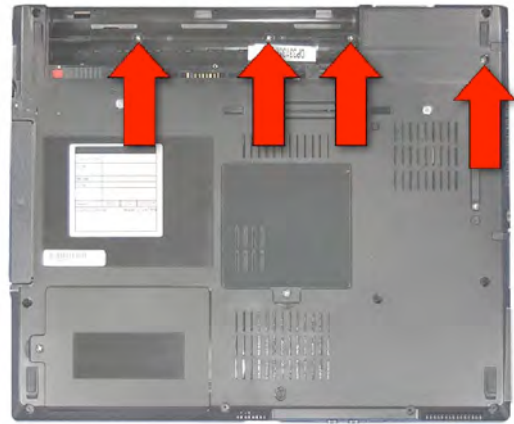
15. Connect the Keyboard Cable to the System Board.



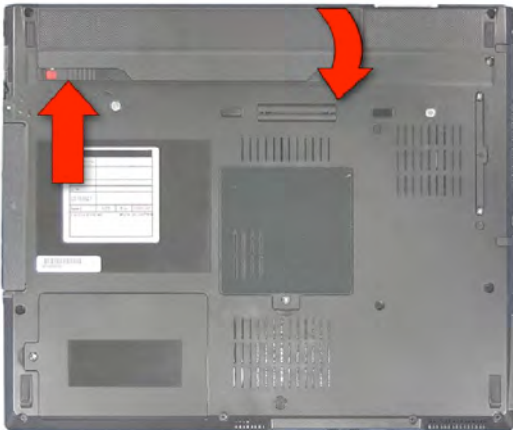
16. Replace the Hinge Cover.



17. Make sure that the Hinge Cover tabs are secure on both sides.



18. Insert 3 screws into the Battery Bay. Insert one screw into the Lower Cover. Insert 3 screws into the Battery Bay. Insert one screw into the Lower Cover.



19. Replace the battery and lock it into place.